

VENTUS S1 evo

Luxury Premium Summer UHP Tire

The moment you get into a car, you can be free of your daily routines and restrictions at unimaginable speeds. The VENTUS S1 evo is the key to this unbound freedom.



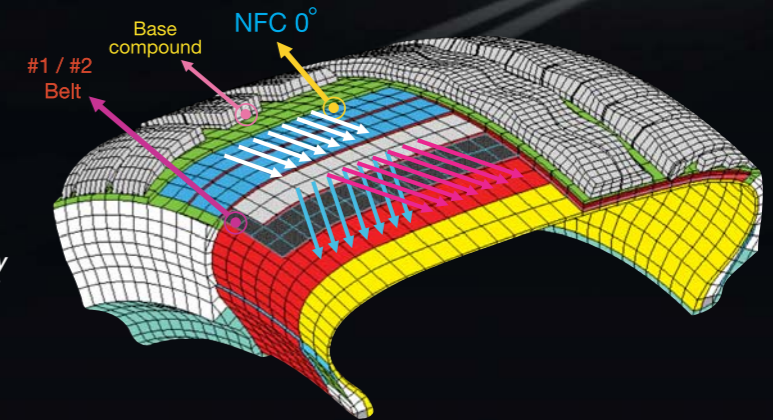
3D Wave & Straight Groove

The K107 outperforms the conventional by applying a wide straight groove on the outer edge and by maintaining the optimal footprint shape



Dry & Wet Handling

Equalized footprint pressure distribution during cornering is measured by optimally combining high-density Nylon Reinforced Belt and Steel Belt

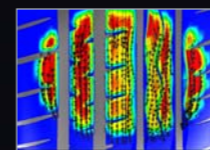


Dry & Wet Braking Performance

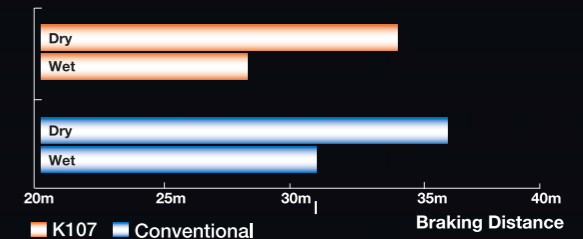
Improve brake force by appropriately combining the longitudinal stiffness of the pattern block with that of the footprint



Continuous rib patterns improve longitudinal stiffness.



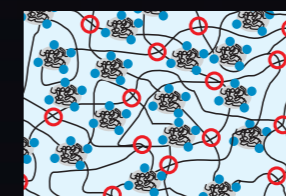
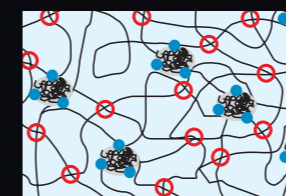
Simulation results are applied to achieve the optimum pattern and structure design (430kg, 2.3bar, 100km/h).



Braking performance of the K107 is as good as that for a conventional pattern on wet surfaces, while the K107 outperforms its rivals on dry roads (dry: 100km/h, wet: 80km/h)

HDS Improves Compound Hysteresis Feature

Highly dispersible silica (HDS) compounding and a new mixing process are applied

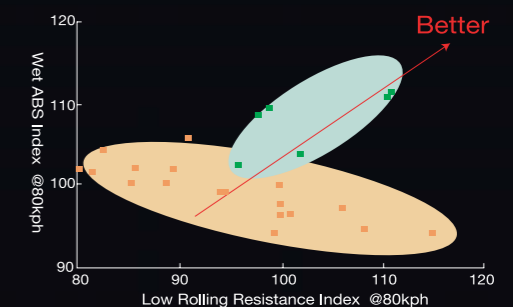


Conventional silica compound

New HDS silica compound

Much better filler dispersion enhances traction performance. More rubber to filler (higher reinforcement) raises fuel efficiency.

- Silica aggregate
- Silica-rubber coupling
- Matrix X-link (Rubber-Rubber network)



- Advanced HDS Silica Compounding Technology
- Conventional Silica + Carbon black Compounding Technology

VENTUS S1 evo

- Luxury Premium Summer Ultra High Performance.
- Luxury Sport Car & Sedan
- 17~22 Inch
- 25~45 Series
- Speed-Rating : Y

1 Jointless Bead Wire & High Hardness Bead Filler :
Improve high speed stability and provide comfort ride.
Maximize steering response, high speed stability and durability.

2 Wide, High-Tensile Steel Belts & Jointless Two-Cap Ply :
Enhance tread strength for steering response and wear life
Improve uniformity for smooth ride and durability.

3 Rim Protector :
Provides better protection against outer shock or scratches.



Size & Specifications

VENTUS S1 evo / K107

Size	PR	S/W Type	Measuring Rim	Max.Air (PSI)	Max.Load		Overall Diameter		Section Width		Tread Width		Tread Depth		SLR	RPM	
					(kgs)	(lbs)	m/m	inch	m/m	inch	m/m	inch	m/m	inch (32")			
45	225/45ZR17 97Y XL	4	SBL	7.5	50	670	1477	634	25.0	224	8.8	196	7.7	8.5	10.6	293	833
						1000	2205	730	28.7	277	10.9	239	9.4	10.5	335	723	
40	195/40ZR17 81W XL	4	SBL	7.0	50	462	1019	586	23.1	198	7.8	171	6.7	8.3	10.4	276	900
	225/40ZR18 92Y XL	4	SBL	8.0	50	630	1389	639	25.1	229	9.0	196	7.7	8.4	10.5	297	826
	235/40ZR18 95Y XL	4	SBL	8.5	50	690	1521	642	25.3	242	9.5	204	8.0	8.4	10.5	298	822
35	215/35ZR17 83Y XL	4	SBL	7.5	50	487	1074	579	22.8	214	8.4	187	7.4	8.3	10.4	272	911
	265/35ZR18 97Y XL	4	SBL	9.5	50	730	1609	640	25.2	269	10.6	231	9.1	8.0	10.0	296	824
	215/35ZR19 85Y XL	4	SBL	7.5	50	515	1135	631	24.8	218	8.6	187	7.4	8.1	10.1	297	836
	225/35ZR19 88Y XL	4	SBL	8.0	50	560	1235	642	25.3	235	9.3	196	7.7	8.1	10.1	301	822
30	255/35ZR19 96Y XL	4	SBL	9.0	50	710	1565	659	25.9	257	10.1	222	8.7	8.1	10.1	306	801
	295/30ZR18 98Y XL	4	SBL	10.5	50	750	1653	637	25.1	292	11.5	265	10.4	8.0	10.0	295	828
	255/30ZR19 91Y XL	4	SBL	9.0	50	615	1356	637	25.1	255	10.0	222	8.7	8.0	10.0	297	829
	• 255/30ZR20 92Y XL	4	SBL														
	• 265/30ZR22 97Y XL	4	SBL														
25	• 305/25ZR20 97Y XL	4	SBL														
	• 295/25ZR22 97Y XL	4	SBL														

Technical data subject to change without prior notice.

• These sizes will be available in 2005

* SBL : Serrated Black Letter

* XL : Extra Load



Head Office:
#647-15 Yoksam-dong, Kangnam-gu, Seoul, 135-080, Korea
Tel : +82-2-2222-1000, Fax : +82-2-2222-1100

040920_K107

hankooktire.com

Visual Language by Research Studios, London



VENTUS S1 evo

Luxury Premium Summer UHP Tire
The key to a world of freedom beyond limits.