

VENTUS R-S2

Street Version of our Racing Tire



Hankook

VENTUS R-S2

Street Version of our Racing Tire

1. 2-ply high-density nylon full cover

Treads are fitted with the superior 2-ply high-density jointless nylon full cover for greater resilience, versus the standard 1-ply full cover and edge cover combination.

2. 2-ply rayon carcass

Rayon was used over standard polyester to minimize distortion at high speeds and high temperatures.

*Rayon carcass only for YR class

3. 2-layer carcass for optimal sidewall strength

A 2-layer rayon carcass, in contrast to the standard 1-layer carcass, minimizes lean while cornering for maximum performance tire specifications.

*Certain smaller specs may have 1-layer carcass

4. High-density bead filler and steel side reinforcements for cornering control

High-density bead filler and steel side reinforcements, usually reserved for racing tires, lend unsurpassed cornering control.



Available Size

VENTUS R-S2 / Z212

| SIZE | Ply Rating | Type | Side Wall Type | Measuring Rim | Recommended Rims | Max.Air (PSI) | Max.Load | | Overall Diameter | | Section Width | | Tread Width | | Tread Depth | | Static Loaded Radius | Rpm | Weight |
|----------------------|------------|------|----------------|---------------|------------------|---------------|----------|-------|------------------|------|---------------|------|-------------|------|-------------|------------|----------------------|-----|--------|
| | | | | | | | (KGS) | (LBS) | m/m | inch | m/m | inch | m/m | inch | m/m | inch (32") | | | |
| 60 195/60R14 86V | 4 | T/L | | 6.0 | 6.0 | 51 | 530 | 1,168 | 590 | 23.2 | 199 | 7.8 | 176 | 6.9 | 6.8 | 8.5 | 269 | 894 | 8.31 |
| 55 205/55ZR16 91W | 4 | T/L | | 6.5 | 6.5 | 51 | 615 | 1,356 | 632 | 24.9 | 212 | 8.3 | 184 | 7.2 | 6.8 | 8.5 | 288 | 835 | 9.46 |
| 50 195/50ZR15 82W | 4 | T/L | | 6.0 | 6.0 | 51 | 475 | 1,047 | 577 | 22.7 | 199 | 7.8 | 176 | 6.9 | 6.8 | 8.5 | 267 | 914 | 8.2 |
| 205/50ZR15 86W | 4 | T/L | | 6.5 | 6.5 | 51 | 530 | 1,168 | 588 | 23.1 | 214 | 8.4 | 184 | 7.2 | 6.8 | 8.5 | 270.1 | 897 | 9.02 |
| 205/50ZR16 87W | 4 | T/L | | 6.5 | 6.5 | 51 | 545 | 1,201 | 612 | 24.1 | 212 | 8.3 | 184 | 7.2 | 6.8 | 8.5 | 282 | 862 | 9.14 |
| 225/50ZR16 92W | 4 | T/L | | 7.0 | 7.0 | 51 | 630 | 1,389 | 632 | 24.9 | 231 | 9.1 | 202 | 8.0 | 6.8 | 8.5 | 289 | 835 | 10.32 |
| 205/45ZR16 83W | 4 | T/L | | 7.0 | 7.0 | 51 | 487 | 1,074 | 590 | 23.2 | 206 | 8.1 | 184 | 7.2 | 6.8 | 8.5 | 274 | 894 | 8.82 |
| 215/45ZR16 86W | 4 | T/L | | 7.0 | 7.0 | 51 | 530 | 1,168 | 600 | 23.6 | 213 | 8.4 | 194 | 7.6 | 6.8 | 8.5 | 277 | 879 | 9.51 |
| 215/45ZR17 91Y XL | 4 | T/L | | 7.0 | 7.0 | 50 | 615 | 1,356 | 626 | 24.6 | 213 | 8.4 | 194 | 7.6 | 6.4 | 8.0 | 291 | 843 | 9.51 |
| 225/45ZR16 89W | 4 | T/L | | 7.5 | 7.5 | 51 | 580 | 1,279 | 608 | 23.9 | 225 | 8.9 | 202 | 8.0 | 6.8 | 8.5 | 282 | 868 | 9.93 |
| 225/45ZR17 94Y XL | 4 | T/L | | 7.5 | 7.5 | 50 | 670 | 1,477 | 634 | 25.0 | 225 | 8.9 | 202 | 8.0 | 6.8 | 8.5 | 293 | 832 | 10.08 |
| 245/45ZR16 94W | 4 | T/L | | 8.0 | 8.0 | 51 | 670 | 1,477 | 626 | 24.6 | 243 | 9.6 | 220 | 8.7 | 6.8 | 8.5 | 285 | 843 | 11.1 |
| 245/45ZR17 99Y XL | 4 | T/L | | 8.0 | 8.0 | 50 | 775 | 1,709 | 652 | 25.7 | 243 | 9.6 | 220 | 8.7 | 6.8 | 8.5 | 300 | 809 | 11.75 |
| 40 215/40ZR17 87Y XL | 4 | T/L | | 7.5 | 7.5 | 50 | 545 | 1,201 | 604 | 23.8 | 218 | 8.6 | 194 | 7.6 | 6.8 | 8.5 | 285 | 874 | 9.5 |
| 225/40ZR18 92Y XL | 4 | T/L | | 8.0 | 8.0 | 50 | 630 | 1,389 | 637 | 25.1 | 230 | 9.1 | 202 | 8.0 | 6.8 | 8.5 | 298 | 828 | 9.82 |
| 235/40ZR17 94Y XL | 4 | T/L | | 8.5 | 8.5 | 50 | 670 | 1,477 | 620 | 24.4 | 241 | 9.5 | 212 | 8.3 | 6.8 | 8.5 | 288 | 851 | 10.08 |
| 35 215/35ZR18 84Y XL | 4 | T/L | | 7.5 | 7.5 | 50 | 500 | 1,102 | 607 | 23.9 | 216 | 8.5 | 194 | 7.6 | 6.8 | 8.5 | 289 | 869 | 8.82 |

Technical data subject to change without prior notice.

Hankook
 driving emotion

Head Office:
 #647-15 Yoksam-dong, Kangnam-gu, Seoul, 135-080, Korea
 Tel : +82-2-2222-1000, Fax : +82-2-2222-1100

hankooktire.com

Visual Language by Research Studios, London

VENTUS R-S2

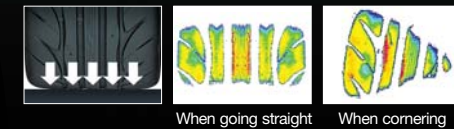
Street Version of our Racing Tire

A max performance tire with superior handling at maximum speeds of 300 kph

- 1. Superior Control : The world's first use of High Grip Silica Compound (HGSC) technology enables an outstanding grip on the road.
- 2. Crisp Cornering : Extra wide shoulder blocks and steel reinforced 2-layer carcass ensure tight cornering.
- 3. Enhanced Durability : 2-ply high density nylon full cover and rayon carcass provide greater durability for high-speed tires.



1. Multi-tread radius for balanced grip of driving surface
A multi-tread radius system delivers sharp, smooth and sure cornering, even at high speeds.



2. Wide shoulder blocks for lateral stiffness
Wide shoulder blocks help reduce tire distortion while cornering, with increased rubber-to-road contact for greater steering control.

3. Wider tread improves driving control

Treads are built with 3% extra width for greater traction, assuring superior performance at high speeds.



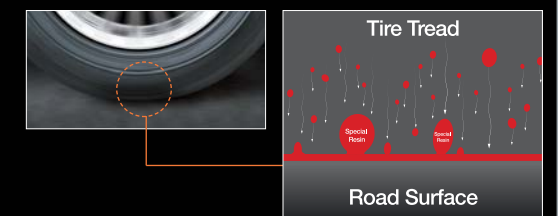
4. Wider center block improves steering response

An extra wide center block maintains a steady grip on the road for sensitive steering response.



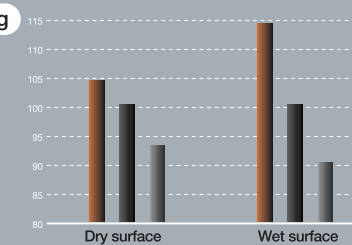
The world's first use of High Grip Silica Compound (HGSC) for steely grip of the driving surface

Advanced resin technology used for racing tires, HGSC, elevates street driving to a new level. The use of this technology means resin particles in the tire respond to surface temperature changes. Higher temperatures move resin particles to the surface and create a super grip on the road for better handling.

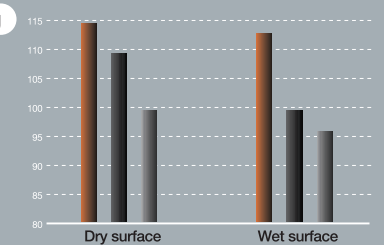


Test Result

Handling



Braking



- Z212
- Competitor A
- Competitor B